

Gateway to the

Southwest Realty



Deborah E. Harris, Qualifying Broker

Office: (575)445-1100 or Toll Free: 866-275-9914 Fax: (575)445-4489
Deborah's Cell: (575)447-0230 Website: www.gatewaysouthwestrealty.com

989 Larkin Street Des Moines, NM



\$95,000

LEGAL
See Exhibit "A"

TAXES
Available at Office

OWNERS
Murlene Riley



744 South Second Street, Raton, NM 87740

E-mail: mail@gatewaysouthwestrealty.com ~*~ Website: gatewaysouthwestrealty.com





2 Bedrooms
1 Bath



Charming
1,120 square feet



Solar heat and
all appliances are
included.



Attached
2 car
Garage

14x80 1972
3 bedroom 2 bath
mobile home



Lots of
upgrades



Nine various sized
parcels of land
are included in the
purchase!



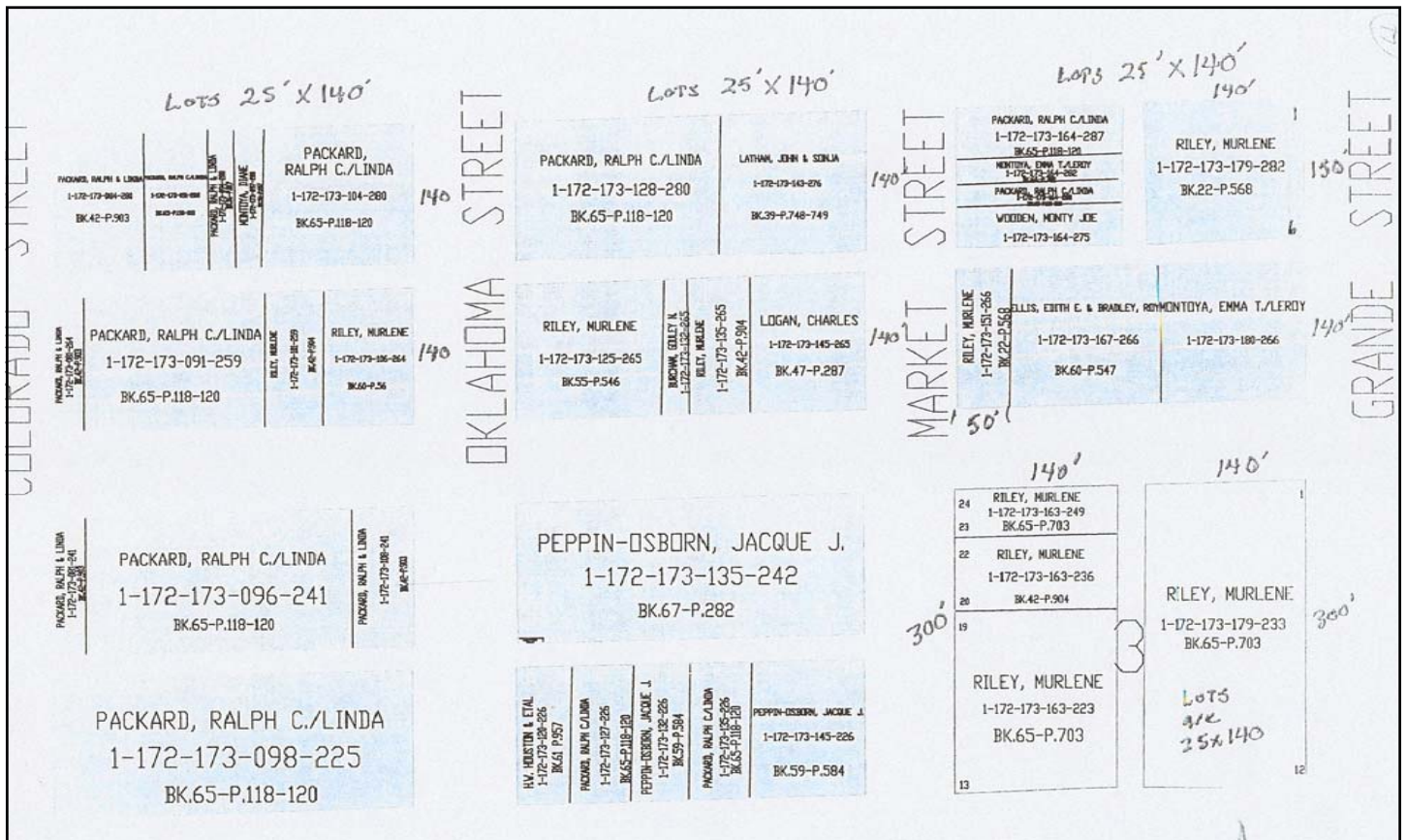


Exhibit "A"

H 000 371 405 10A 114436
 989 LARKIN AVE.

J. S. ASTRO
 014X072 MTH
 LOC-DM BLK. 11 SAAVEDRA'S ADD.

1 172 173 101 259
 FILE 7 42 PG 904 200401060 10/06/04
 SAAVEDRA ADDITION
 BLOCK 10
 LOT 20 21

1 172 173 106 264
 BOOK 60 PG 56
 SAAVEDRA ADDITION
 BLOCK 10
 LOT 22 - 24

1 172 173 125 265
 BOOK 55 PG 546
 SAAVEDRA ADDITION
 BLOCK 11
 LOT 13 - 17

1 172 173 135 265
 FILE 7 42 PG 904 200401060 10/06/04
 SAAVEDRA ADDITION
 BLOCK 11
 LOT 19 - 20

1 172 173 179 282
 FILE 1 22 PG 568 199901053 10/25/99
 SAAVEDRA ADDITION
 BLOCK 12
 LOT 1- 6

1 172 173 151 266
 FILE 1 22 PG 568 199901053 10/25/99
 SAAVEDRA ADDITION
 BLOCK 12
 LOT 13 -14

1 172 173 179 233
 FILE 1 65 PG 703 199003703 01/25/90
 SAAVEDRA ORIGINAL
 BLOCK 3
 LOT 1- 12

1 172 173 163 236
 FILE 7 42 PG 904 200401060 10/06/04
 SAAVEDRA ORIGINAL
 BLOCK 3
 LOT 20 21 22

1 172 173 163 223
 FILE 1 65 PG 703 199003703 01/25/90
 SAAVEDRA ORIGINAL
 BLOCK 3
 LOT 13 - 19

1 172 173 163 249
 FILE 1 65 PG 703 199003703 01/25/90
 SAAVEDRA ORIGINAL
 BLOCK 3
 LOT 23 - 24